



Conversation 2

“Creating Mobility and Access for All”



Narrated by

*Jason Lewis
Director of Transport Planning
Stantec*

“

Winterbourne Fields could contribute towards an upgraded A2 junction at Dunkirk – this could include an improved eastbound connection and a new westbound connection to the A2.

In addition to the highways improvements there is an opportunity to create new and improved walking and cycling routes building upon existing networks.

Winterbourne Fields can help to turn this into a reality.

”

A2 Barrier

The A2 highway drives a physical barrier through the existing village communities to the north and south.

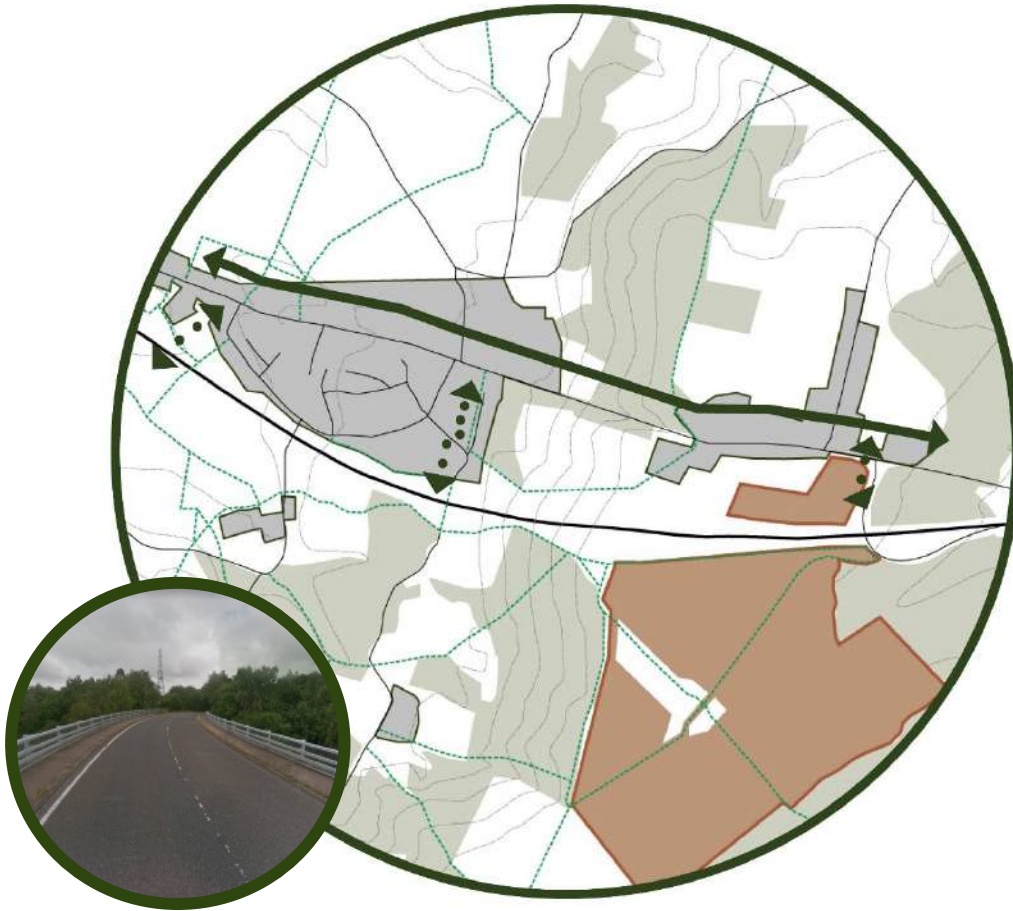


Poor Westbound Connections

The current A2 junction arrangement **does not allow for a west entry/exit at Dunkirk** along the Boughton Bypass.



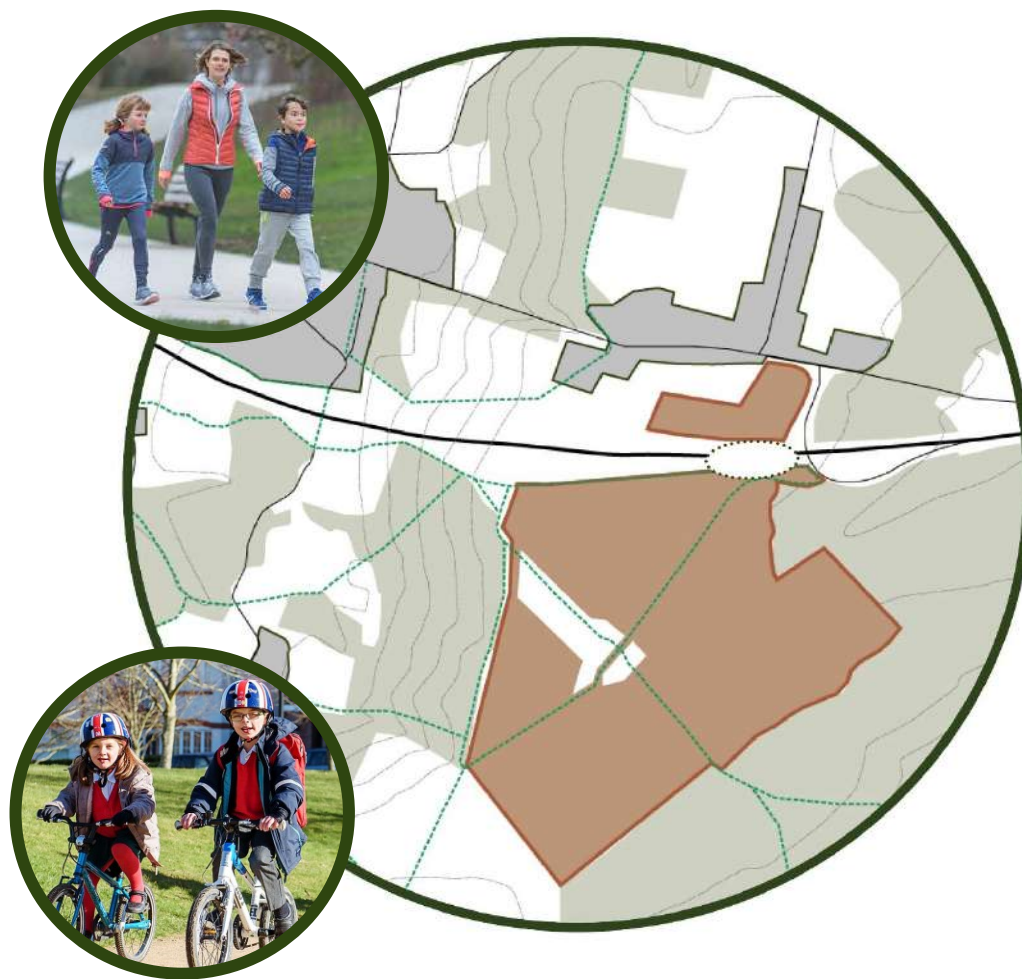
Poor access routes across the A2



Pedestrian and cycle connections across the A2 road corridor are alongside high speed slip roads, with **limited or no footpaths in some areas.**

Creating a Family of villages

The development of Winterbourne Fields presents an opportunity to **better connect the communities of Boughton and Dunkirk to the north, with Oversland and Selling to the south through creation of an upgraded junction.**



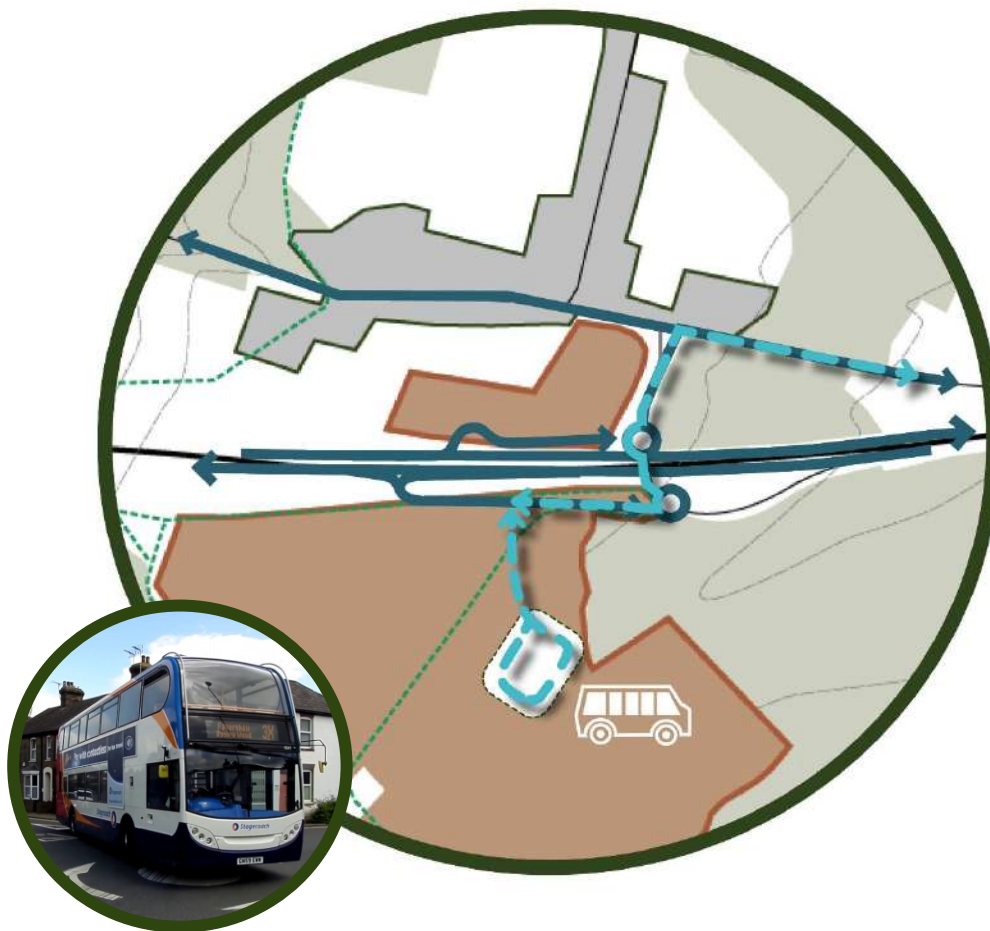
Reducing Congestion



Winterbourne Fields
**can be served by a
direct access to the A2,**
with both eastbound and
westbound connections to
and from Faversham and
Canterbury.

Bus Connections

Winterbourne Fields can be **served by a direct bus link from the A2**, connecting to a transport hub to the south, utilising an improved Number 3 bus service between Canterbury and Faversham.



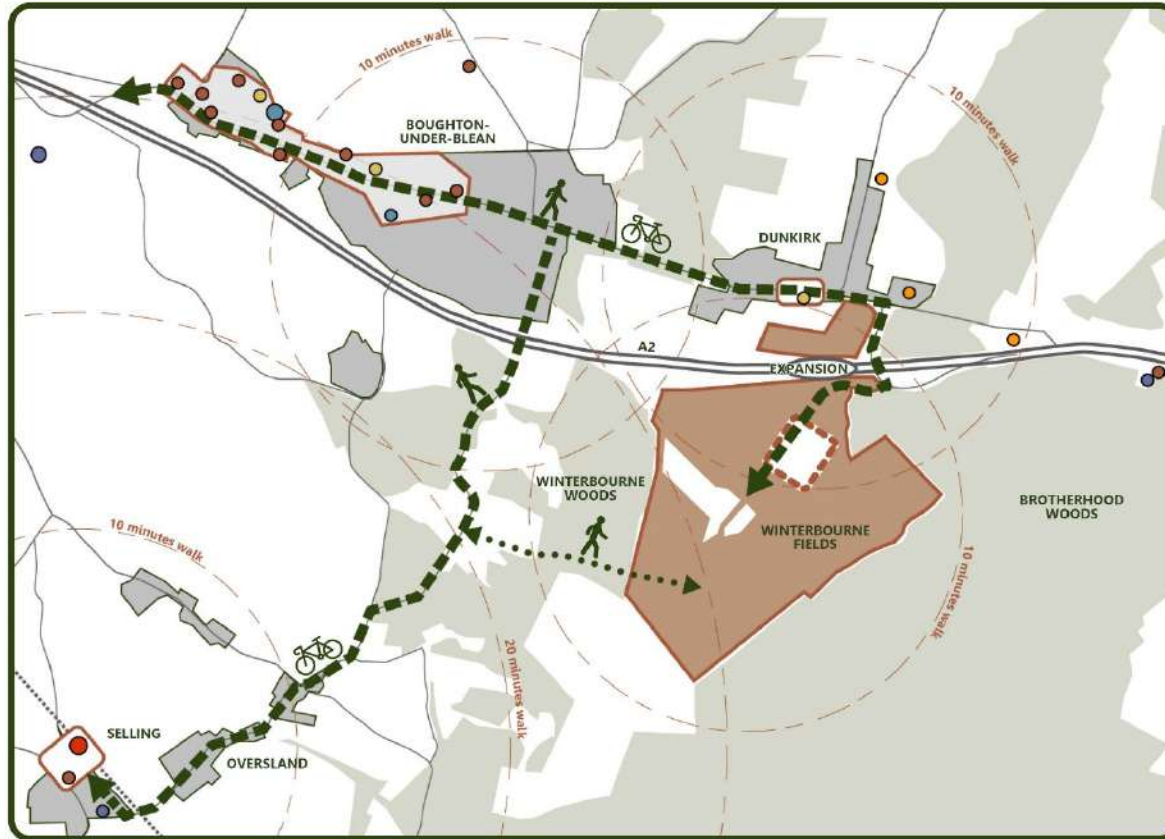
A Forward Thinking Access Strategy

At the heart of Winterbourne Fields **we will be responding to the carbon challenge.**

Electric vehicle charging points, integrated cycling and walking links - including facilities for electric bikes and public transport connections – can be incorporated from the start.



Providing access to Winterbourne Fields



Winterbourne Fields will focus on **creating new safe walking and cycling links** – providing connections between the existing communities and wider countryside routes.

New recreation routes

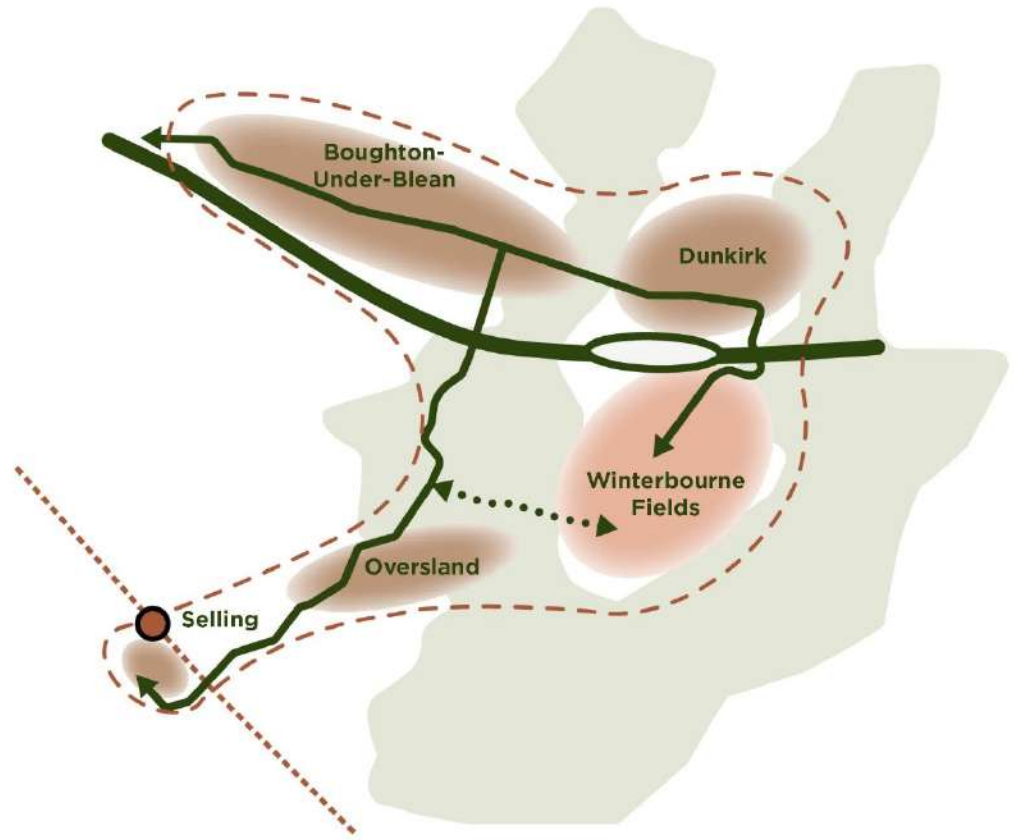
Up to 5 kilometres of new countryside routes

can be created within
Winterbourne Fields to support
the health and well-being of
residents.



A Family of Villages

Enhanced connections between Boughton, Dunkirk, Winterbourne Fields, Oversland and Selling would **create a family of villages.**



High Quality Utilities and Communications Infrastructure

New electric, water, drainage and 5G broadband infrastructure could power the new development, **with 10% of power generated by on-site renewables.**



Your Views will be Heard and YOU WILL influence the proposals

LISTEN



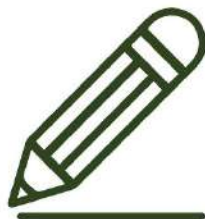
**the
community**

ENGAGE



**We would like to hear from
you – the community – on your
aspirations, hopes and fears
for access and infrastructure
arrangements at Winterbourne
Fields.**

LEARN



CONVERSATION 2



our turn to
listen to you

