



## Conversation 3

*“A Social Heart & Community Facilities”*



*Narrated by*

*Dan Town  
Design Director*

*OSG Architects*

“

***“Winterbourne Fields can complement the existing villages of Boughton, Dunkirk, Oversland and Selling. It can create services that add to the quality of life to these villages.***

***From new jobs, a primary school, new healthcare, shops, and pubs - it is possible to start thinking about what could be achieved at Winterbourne Fields.”***

”

## Existing Community Facilities and Network

Boughton, Dunkirk and Selling are home to some great community facilities - **including a village hall, places of worship, primary and nursery schools, shops, pubs and cafes.**



# Employment and the Local Economy

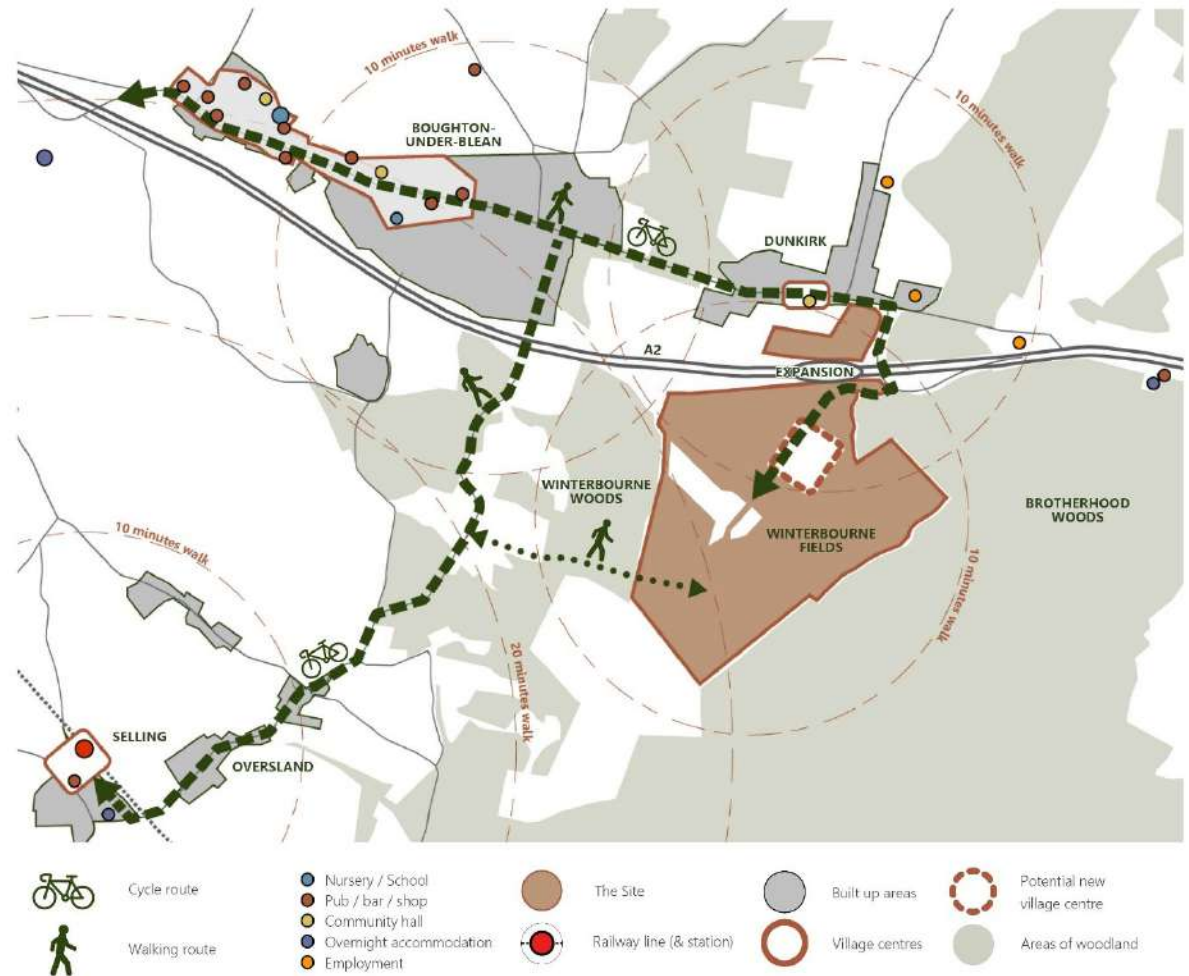
There are **local businesses including office space and distribution** located between the four villages which **provide** local jobs.



# Employment and the Local Economy

We've mapped the existing non-residential uses within Boughton, Dunkirk, Oversland and Selling. **We would like to understand your views on your community facilities?**

What is successful?  
What is needed?



## New and Improved Community Facilities

Winterbourne Fields could **contribute towards existing community infrastructure** through financial investment and provide new facilities which complement rather than compete with what currently exists.



# Which New Facilities are Needed?

**Winterbourne Fields could support a new community-focused Village Centre** - including shops, flexible community space, a work hub and coffeehouse, a microbrewery, a deli stocking locally sourced produce, or a pharmacy. The mix of facilities within the Village Centre will be co-designed by the local community. After all it is your community.



## Key Education and Healthcare Services

**To help relieve pressure on existing schools and GP surgeries.**

Winterbourne Fields could help create solutions.





# A Social Heart for Winterbourne Fields

## A new Local Centre can be created within Winterbourne Fields.

The location, size and mix of community and business uses can be influenced by you. Please tell us what is needed?



# Your Views will be Heard and YOU WILL influence the proposals

**LISTEN**

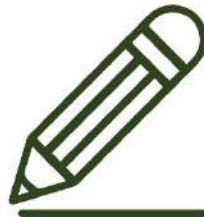


**the  
community**

**ENGAGE**



**LEARN**



**We would like to hear from you - the community - on your aspirations, hopes and fears about existing and potential community facilities, both within the existing communities and the proposed Winterbourne Fields development site.**

# CONVERSATION 3



our turn to  
**listen to you**

