



# Winterbourne Fields

## Mobility Centre and Hubs

**Our transport vision for Winterbourne Fields is to create a vibrant, sustainable and landscape led community, where travelling sustainably is more favourable than travelling by private car.**

A mobility centre and network of smaller hubs will provide opportunities for residents to gain access to information and booking facilities for public transport services, e-bike hire or car club rental facilities, as well as acting as hubs for cycle parking, e-cycle charging and delivery service lockers - with the aim of encouraging residents to reduce their car usage in favour of more sustainable methods of transport. The mobility centre will be located close to the village centre giving access to express bus services, while mobility hubs will be located within a 3-minute walk of homes, providing easy access to facilities and supporting centralised parking arrangements.

Located with communal parking areas on the primary access road, adjacent to green open spaces, mobility hubs will become focal points for community activities such as open air yoga classes, running groups, nature trail walks/education opportunities or simply as a place to rest or meet a friend. The mobility centre and hubs are also designed to become a key part of the Winterbourne Fields sustainability network, with green roofs and photovoltaic panels, as well as helping to increase biodiversity on site by using green walls, the installation of bee/insect hotels, bird nesting and bat roosting boxes.

### Mobility Centre and Hubs:

Centralised parking areas with access to car clubs and e-cycle hire facilities to create opportunities to reduce car usage

Opportunities to increase biodiversity net gain with green roofs & walls, insect hotels and bird boxes



Narrower roads create more opportunities for sustainable infrastructure on site

Create informal meeting places for residents, visitors and community groups next to open green spaces

Help to reduce vehicle movements on site by acting as delivery hubs

Encourage more sustainable transport options

The mobility centre operates as a bus stop, with hubs serving as ticket booths and future bus stops - enabling expansion of the bus network

Provide educational opportunities for residents and visitors to learn more about the local area

Opportunities for community solar PV installations

Provide access to cycle parking, e-cycle charging/hire facilities

Provide access to information and hire facilities for car club vehicles

Provide public transport updates for local bus and train services

Provide access to delivery lockers for convenient, secure parcel drop-off / collection



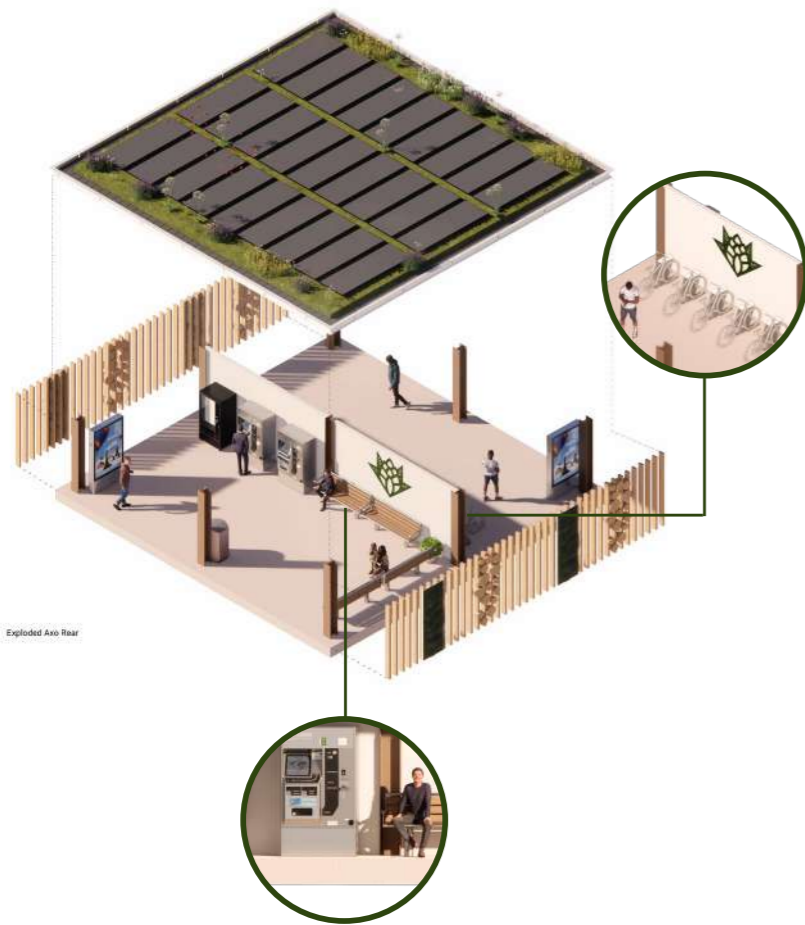


# Winterbourne Fields

## Mobility Centre and Hubs

The transport vision for Winterbourne Fields is to create a vibrant, sustainable and landscape led community, based around a network of green streets - maximising green-blue infrastructure opportunities whilst ensuring that car parking does not dominate the streetscape. To help achieve this, a new innovative concept for parking on site has been created. This ensures delivery of the vision whilst providing flexibility in design.

### Mobility Centre and Hubs:



- Key
- Suggested locations for Mobility Centre
  - Suggested locations for Mobility Hubs
  - Suggested locations for Centralised Parking
  - Isograph showing average 2-minute walk



#### STANDARD

On-plot parking spaces, the traditional arrangement for housing developments resulting in lower densities, wider streets and larger areas of hard standing



#### HYBRID

A mixture with some on-plot spaces and others parking in centralised courts - provides more dense layouts and greater opportunities for sustainable infrastructure



#### CENTRALISED

All residents parking in street facing, centralised areas supported by mobility hubs - provides higher density layouts and greener streets free from parked vehicles